

David and "Orcy" do their thing!

I say "lucky" because, as it turned out, *David* was the one to get to feed *Orcy*!

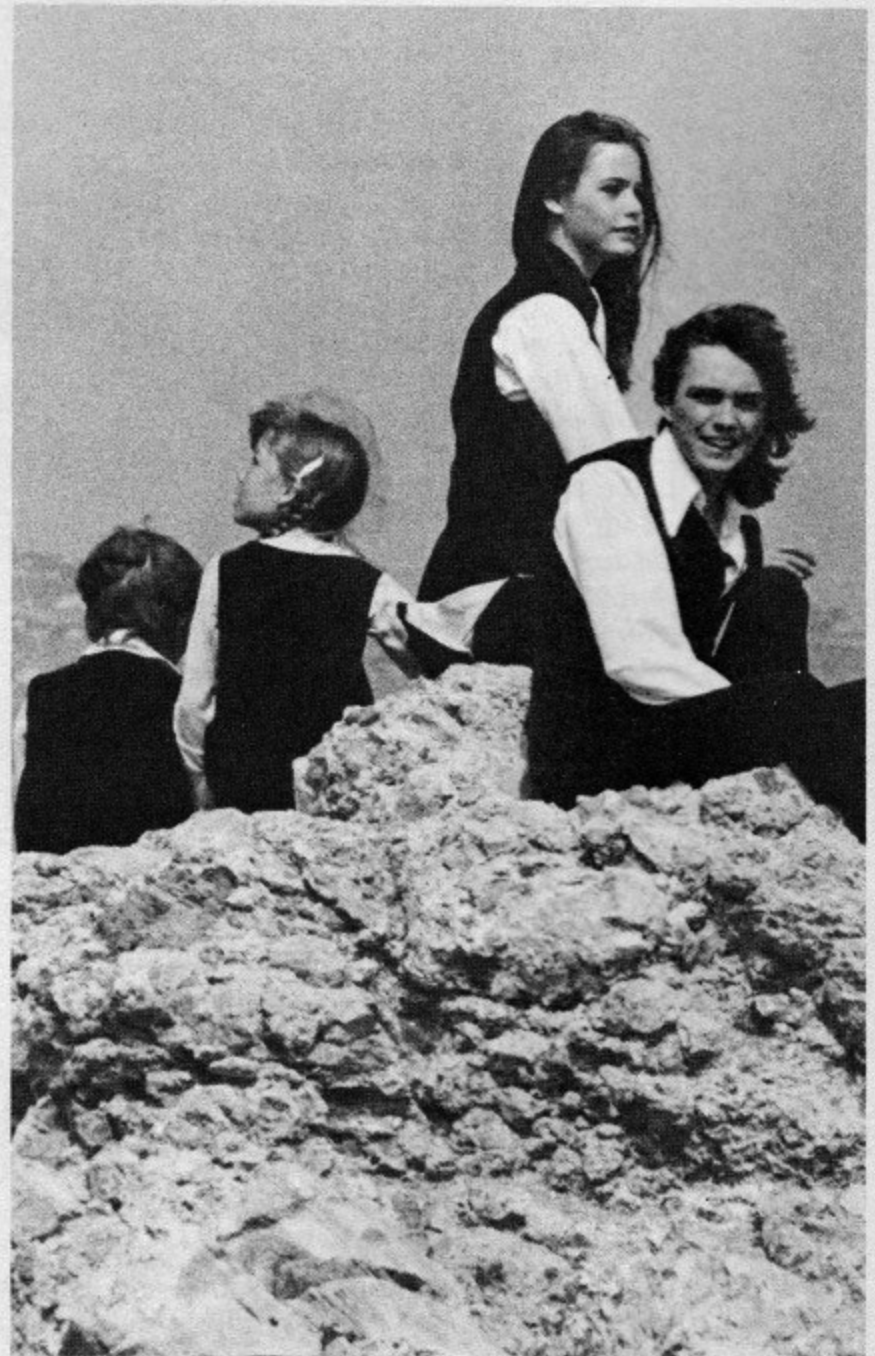
Within minutes, the director had David on the feeding platform with a bucket of fish and a *huge*, hungry whale! It took a few attempts, but David finally learned to drop the fish right down *Orcy's* throat! After each successful feed, *Orcy* would rear up out of the water and hold still for a few seconds so that David could pat his nose. Don't tell anyone, but *personally* I think David was a little nervous during the shooting. When you see the Marineland sequence—which is called "Whatever Happened To Moby Dick"—on ABC-TV's *The Partridge Family* series this fall, watch David's whale feeding scene carefully—and then you decide if he was nervous or not when the scene was shot!

HIGH ON A WINDY HILL

The final shot for the day took place high, high up on a rocky hill that overlooked Marineland, the Palos Verdes Estates peninsula, Long Beach and the great blue-gray Pacific Ocean. Once again, we had quite a climb up—and we couldn't take you all the way because of the "on camera" sequence we were to do. But David and I parked you on a nice, big rock part of the way up, and you sat and watched as we did our exciting, wind-blown final scene. I have a feeling you dug watching that scene more than the others—because every time I turned around, I caught David looking straight at you!

It was a perfect way to end a work day and when the final take was done—you, David and I hopped back into his brand-new white Corvette Stingray. And, as the sun began to set over the Pacific, it found you, David and me soaring up the Pacific Coast Highway north—back towards Hollywood!

S'all for this time, but there will be more—much, much more in the jumping January issue of 16! The January 16 goes on sale November 23—so meet David and me and the rest of *The Partridge Family* gang here then!!



David—looking straight at you!