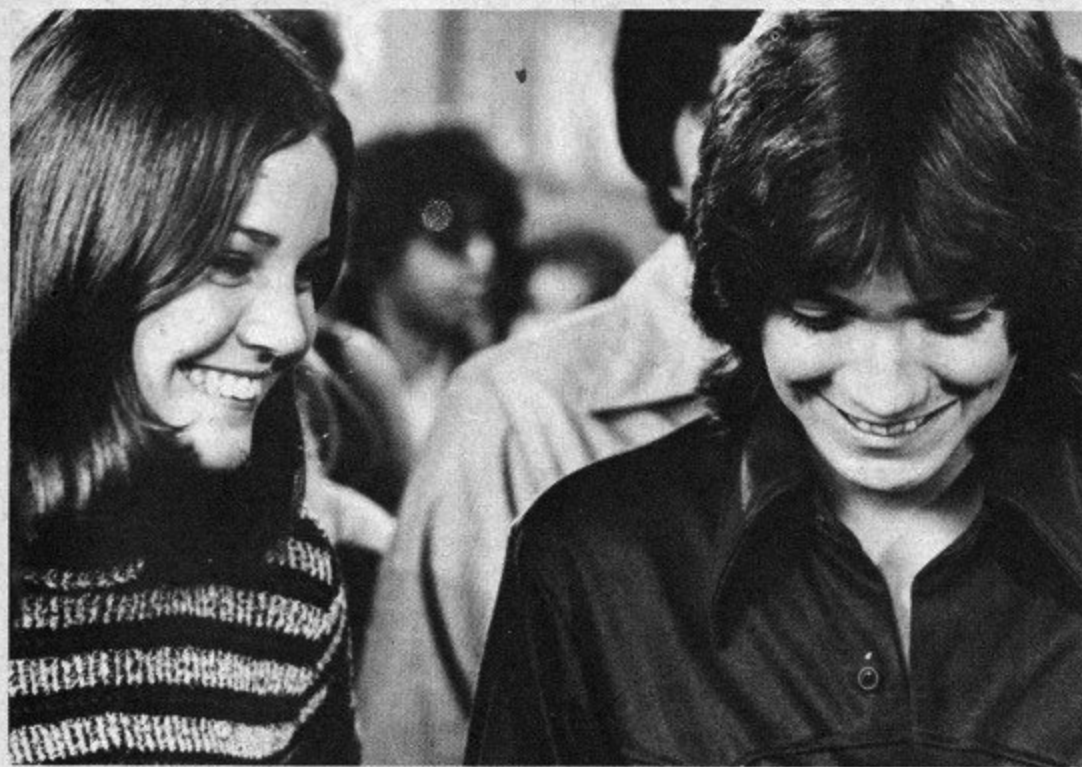




**ACTUALLY WORKING WITH DAVID** still seems like a dream to me. He was so helpful when I was so nervous.

Between scenes he'd talk to me about all sorts of things to take my mind off how nervous I was and what I had to say!



**FOR MY PART ON THE SHOW,** I played a Partridge fan. I had to walk up to David and say, "Oh, Keith, you're so wonderful." Then I walked by Shirley and Dave Madden!

**EDITORS ANN MOSES,** Sharon Lee and Laudy Powell all were there on the set with me the morning I filmed my scene. At right, I get my script from producer Bob Claver and below the director explains what to do.



**SHIRLEY JONES** is just like you expect — sweet and thoughtful. Just before I filmed my scene, she took me aside and gave me some words of encouragement that I'll never forget!



**DAVID INTRODUCED** me to his good friend Al Rhodes and the next day Al took me on a tour of Disneyland!

**CONTINUED ON PAGE 62**

